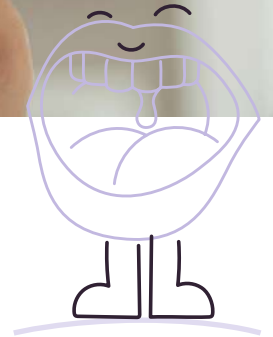




The Center for Rural Health Innovation



THE SCHOOL-BASED TELEHEALTH REVOLUTION: How Tyto Care is transforming remote care in rural schools

Executive Summary

The Center for Rural Health Innovation (CRHI) is a non-profit based in North Carolina with a mission to apply innovative technologies to improve access to healthcare in rural communities. CRHI's Health-e-Schools program is designed to improve access to healthcare for students through telemedicine. The program relies on grant funding and in the past has utilized standard telehealth examination tools that proved difficult to scale. By implementing Tyto Care's portable, reliable, and cost-effective remote examination platform, the program was able to address the limitations of their existing tools and offer telehealth to more schools at a lower cost.

”

“I am so excited to see what this technology can do to help our community. There are so many children with limited access in need of healthcare. Reaching people in my own community in a way we have not been able to do before is a game changer and will have significant value for our children. We plan to roll out Tyto Care to our other counties as well to extend the reach of telehealth to the communities we serve.”

”

Allison Bell, Health-e-Schools
Program Director

Challenge

Health-e-Schools program relies on grant money to fund their telehealth program initiatives. The program's goal is to provide telehealth services to all 26 schools across Burke County with a budget of \$25 thousand. Previously, Burke County Schools was only able to provide coverage to 6 of the 26 district schools within their limited budget. Although the tools enabled the schools to conduct telehealth, there were some limitations with poor portability, unreliable equipment, difficult user experience and expensive telemedicine devices.

Solution

Burke County received grant funding in 2017 and purchased TytoPro™ exam kits to replace their existing telemedicine system. Each TytoPro exam kit includes a hand-held exam tool to examine the heart, lungs, skin, throat, ears, and body temperature - a complete telehealth platform for sharing exam data, conducting live video exams, and scheduling visits; a cloud-based data repository with analytics; and built-in guidance technology and machine-learning algorithms to ensure accuracy and ease of use. The Tyto platform easily integrates with EHR systems and other telehealth platforms, as well as examination tools such as blood pressure cuffs and pulse oximeters.



26

Schools

12,584

Students

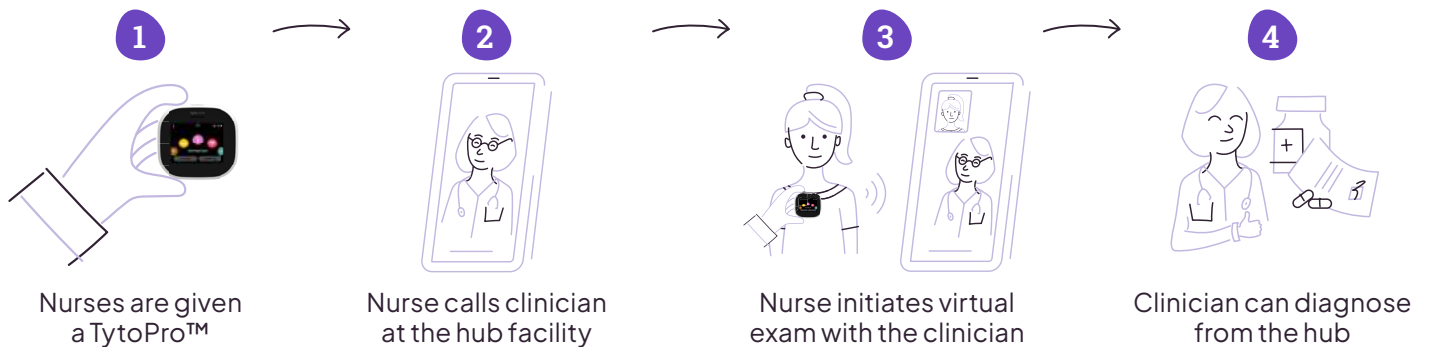
100%

Funded by Grant

\$25,000

Budget

Implementation



Key Findings

During the pilot program, the previous telemed provider was capable of providing service for 6 schools within a \$25K budget whereas Health-e-schools are able to cover all 26 schools within the district with the same budget.



6 schools covered by previous telehealth provider



26 schools covered by Tyto Care



89%

Of students were able to return to class



98%

Of telehealth visits were successful

Tyto Care vs. Traditional Telemedicine Tools

Ease of Use:

Hands-on implementation was easier and took less time with Tyto Care than with the traditional telemedicine tools. CRHI staff also found it easier to train nurses, health professionals, and personnel to use Tyto than previous solutions. Tyto Care's modular design makes it easy to switch from one exam to the next.

Portability:

Tyto Care is easy to transport between schools, thereby extending the reach of nurses and reducing associated costs of hiring additional staff.

Price:

The \$999 price point of TytoPro™, plus platform fees (\$2,499 for the complete TytoClinic™ with built-in Pad, additional exam peripherals, and Wi-Fi connection)

enables vastly more schools to enjoy the benefits of telehealth.

Improved Access and Coverage:

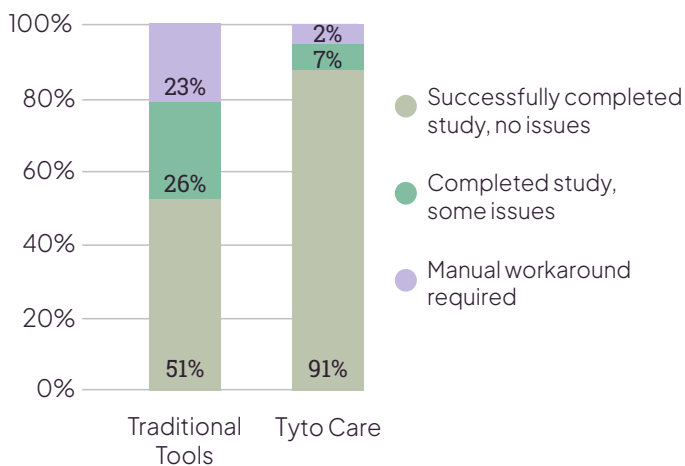
Using Tyto Care enabled more sites to have telehealth coverage versus traditional tools. With this expanded coverage, nurses are able to examine common complaints, including strep throat, ear, sinus and respiratory infections, chronic conditions, and flu.

Reliability:

Since Tyto Care was implemented in 2017, 91% of all telehealth exams were performed successfully without issues, whereas only 51% of the exams conducted using telemedicine tools were successfully completed without issues.

Reliability

Traditional Tools vs. Tyto Care: Visit Analysis



According to Dr. Hensley, the biggest issue with the traditional telemedicine tools was that the exam peripherals often did not connect well to the software or the video was not working. The staff would need to restart the program or unplug and re-plug the exam devices, which was frustrating and time consuming. The biggest initial issue with Tyto Care was limited Wi-Fi connectivity. The rooms the nurses were using did not have a strong Wi-Fi connection, so boosters were placed outside the rooms, which helped resolve the issue. Tyto Care also has features specifically designed to mitigate connectivity issues that can occur over Wi-Fi to help ensure a successful telehealth visit.

For more information about Tyto Care Professional programs for Health Systems, please visit tytocare.com.

Contact us at **866-971-8986** or sales@tytocare.com